

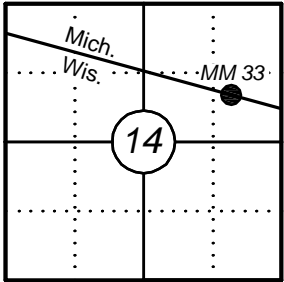
U.S. PUBLIC LAND SURVEY MONUMENT RECORD

Note: This form is intended and designed to fulfill all requirements of Wisconsin Administrative Code, Chapter A-E 7.08 U.S. Public Land Survey Monument Record (3) (a)(b)(c)(d)(e)(f)(g)(h)(i). An additional sheet may be added if necessary to confirm with said requirements.

(a) Corner Location:

Section 14 - Mile Marker 33  
Township 43 North  
Range 8 East  
Town of Land O' Lakes  
County of Vilas

Corner ID: 4308142708  
Vilas County Coordinates (NAD 83/2011):  
N=212824.86  
E=449663.91  
Coordinates Obtained By:  
Network RTK / Direct Observations



(b) History of Original Corner:

Original Surveyor: William Burt  
Date of Survey: 1847

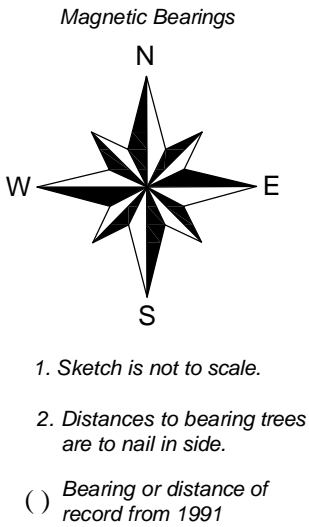
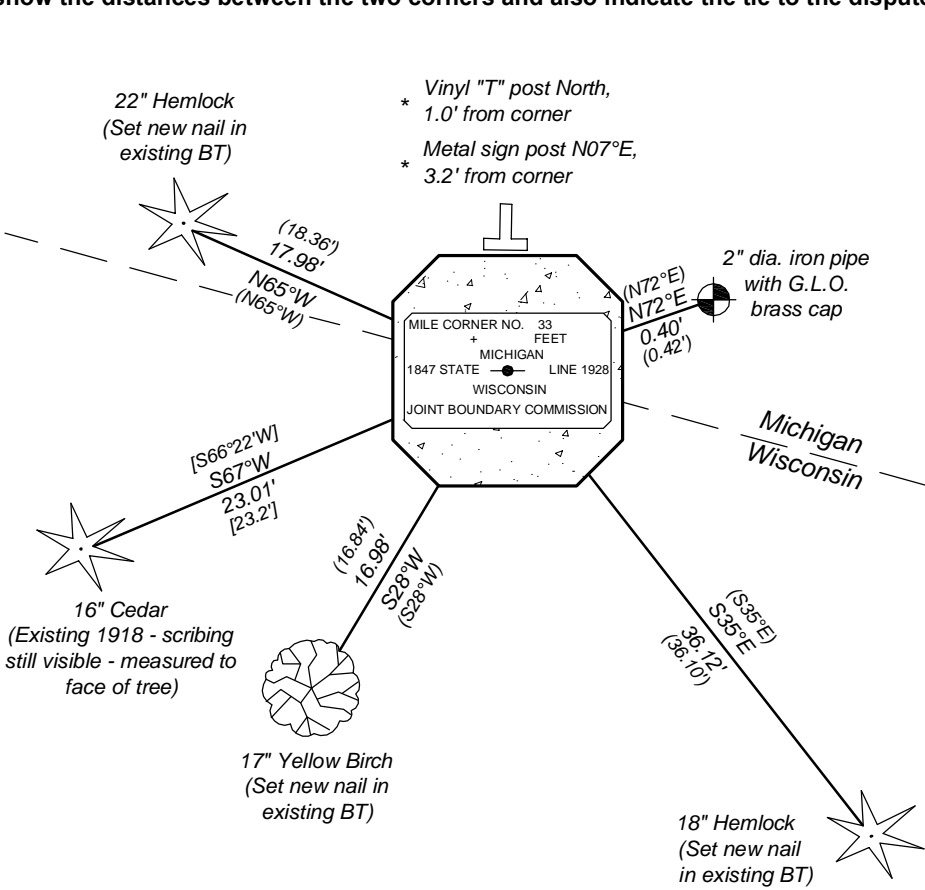
Original Bearing Trees: 6" Hemlock - S 02° E, 41 Links  
12" Hemlock - N 56° E, 4 Links

(f)(g)(h) Description of monument found at this corner and if it was accepted, state all evidence (material, testimonial, occupational, plats, records, other monuments) used as a basis for establishing location. If reestablishing through lost corner proportionate methods, indicate all monuments, distances, and directions used to establish. Indicate type of monument and sign post found or set.

See existing Land Corner Recordation Certificate by Richard L. Drahn dated February 12, 1991 for corner history.

01/17/2017 - As part of the 2016 Vilas County PLSS Corner Perpetuation and Maintenance Project for the Wisconsin/Michigan Stateline, I found a 6" square concrete monument with brass plate stamped to identify the corner with a 2-1/2" diameter iron pipe with G.L.O. brass cap next to monument. I found all three bearing trees from 1991 along with the Cedar bearing tree from 1918. I set a new nail in the three existing bearing trees from 1991 and referenced the 2-1/2" diameter iron pipe with G.L.O. brass cap to witness the corner as shown below.

(c)(d)(e) Plan view of corner with ties to at least four witnesses. If in disagreement with previously established corner, show the distances between the two corners and also indicate the tie to the disputed corner.



Certification

I, Gregory S. Maines, Professional Land Surveyor No. 2729, hereby certify that the corner location on this record was referenced by me or under my direction and control and that this U.S. Public Land Survey Monument Record is complete to the best of my knowledge and belief.



Index No.:

---

---

**MM 33 - Section 14, T 43 N, R 8 E**

---

---

**Monument**



**Facing North**



**Facing East**

MM 33 - Section 14, T 43 N, R 8 E



Facing South



Facing West

# LAND CORNER RECORDATION CERTIFICATE

FILING REQUIREMENT OF ACT 74, MICH. P.A.1970

Gogebic County

FOR CORNERS OF--	LOCATED IN--	CORNER CODE NUMBER
1. PUBLIC LAND SURVEY_____	T. 44 N. S., R. 41 IX. W.	DE-6-7
2. PROPERTY CONTROLLING IN SECTION_____	, T. _____ N. S., R. _____ E. W.	_____
3. MISCELLANEOUS PROPERTY IN SECTION_____	, T. _____ N. S., R. _____ E. W.	_____
4. LOT NO. _____, RECORDED PLAT _____		
5. PRIVATE CLAIMS _____ Mich.-Wisc. State Line Mile Corner 33		

I, Richard L. Drahn do hereby certify that under requirements of P.A. 74, Michigan P.A. of 1970, the corner points mentioned in lines 1 and 2 above (identified with circles on index code diagram—over) were, in a field survey on August 28 1990, established, re-established, monumented, re-monumented, recovered or restored as expressed below and in conformance with regulations and rules therefore as required in the current manual of survey instructions of the United States Department of the Interior, Bureau of Land Management or by a decree of a court of law. Furthermore, that the corner points mentioned in lines 3, 4 and 5 above were, in a field survey on \_\_\_\_\_ 19\_\_\_\_, found, recovered, restored, established or re-established as expressed below and in conformance with the rules of the Michigan State Board of Registration for Land Surveyors or, by a Decree of a Court of law:

A. Description of original monument and accessories and/or subsequent restoration:

Corner established by William A. Burt, U.S. Deputy Surveyor in 1847. Original bearing trees: Hemlock 6", S.02°E., 41 links; Hemlock 12", N.56°E., 4 links. Earl G. Harrington, Cadastral Engineer in 1928 recovered this corner marked by a 1" iron post set by the G.L.O. in 1918. Iron was at recovered bearing and distance from the original SE bearing tree. Harrington replaced the iron pipe with a 6" x 6" concrete post with a brass template stamped to indicate corner position. 1918 B.T.'s: Cedar 14", S.66°22'W., 23.2 feet; 8" maple, N.22°-25'E.22.9 feet. Iron Post placed alongside concrete monument.

B. Description of corner evidence found and/or method applied in restoring or re-establishing corner:

Corner position found marked by a 6" x 6" concrete post with a brass tablet stamped to indicate corner position at record bearing and distance from the 1918 G.L.O. bearing trees. The first is now a 14" cedar with scribing visible; the second one is now a stump hole. 2" dia. iron pipe with G.L.O. brass cap bears S.70° E. 0.42 ft. from corner position.

C. Description of monument for corner and accessories established to perpetuate locating the position of the corner:

From the above described concrete monument I established the following new blazed and scribed bearing trees and reference objects:

17"	Hemlock	N.65°W.	18.36 feet
13"	Hemlock	S.35°E.	36.10 feet
12"	Y.Birch	S.28°W.	16.84 feet
6'	Steel rail	N.06°E.	3.09 feet

SIGNED BY \_\_\_\_\_ DATE \_\_\_\_\_

SURVEYOR'S MICHIGAN REGISTRATION NO. \_\_\_\_\_

FOR STATE AND UNITED STATES AGENCIES:

SIGNED BY \_\_\_\_\_ DATE \_\_\_\_\_

APPROVED AND SIGNED BY Richard L. Drahn DATE February 12, 1991

MICHIGAN REGISTERED LAND SURVEYOR

(SEAL)

U.S.F.S. #LM-8-9

SURVEYOR'S MICHIGAN REGISTRATION NO. 21564



K.L.-20,21